

**SUBJECT: Well-being Assessment: Progress Update**

**MEETING: Public Service Board Select Committee**

**DATE: 11<sup>th</sup> October 2016**

**DIVISIONS/WARDS AFFECTED: All**

## **1 PURPOSE**

- 1.1 To provide members with an update on progress to date and planned activity to prepare the Well-being Assessment for publication in March 2017.

## **2 BACKGROUND**

- 2.1 The Well-being of Future Generations (Wales) Act is about sustainable development which is the process of improving the economic, social, environmental and cultural well-being of Wales, by taking action in accordance with the sustainable development principle aimed at achieving well-being goals.
- 2.2 One of the responsibilities placed on the Public Service Board by the Act is to prepare and publish a local well-being Assessment within twelve months of the Assembly elections.
- 2.3 Public Service Boards should expect to be scrutinised on the process of how they agreed their priorities. To ensure objectivity and robustness of their decisions, it is essential to collect and analyse good evidence in the preparation of assessments to feel satisfied that their priorities accurately reflect the diversity and variety of issues in the area.

## **3 RECOMMENDATIONS**

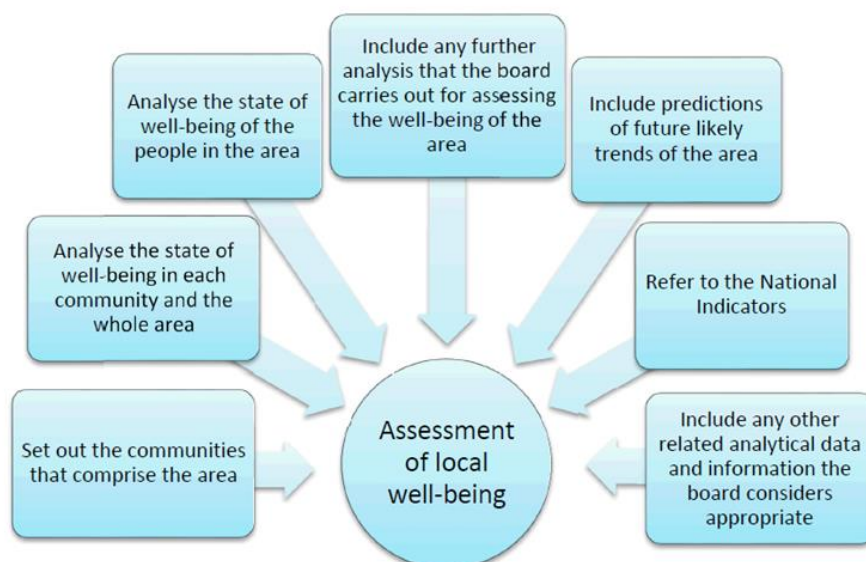
- 3.1 Members are invited to scrutinise this paper to ensure that the Public Service Board is making sufficient progress towards meeting its responsibilities under The Act.

## **4 KEY ISSUES**

- 4.1 The Well-being of Future Generations Act is a ground-breaking piece of legislation that should ensure that public bodies think more about the long term, work better with people and communities and each other, look to prevent problems and take a more joined-up approach. It sets out in law a definition of sustainable development.
- 4.2 The sustainable development principle is made up of five ways of working that we are required to take into account. These are: Looking to the *long term* so that we do not compromise the ability of future generations to meet their own needs; Taking an *integrated* approach so that public bodies look at all the well-being goals in deciding on their well-being objectives; *Involving* a diversity of the population in the decisions that affect them; Working with others in a *collaborative* way to find shared sustainable solutions; Understanding the root causes of issues to *prevent* them from occurring.
- 4.3 The Act highlights the importance of balancing short-term needs with the need to safeguard the ability to meet long term needs. It is expected that public bodies and

public services boards will look at least 10 years ahead, although best practice would be to look 25 years ahead.

- 4.4 The production of a well-being assessment is a key part of identifying the priorities for the area. The assessment will be evidence based and draw on a range of sources, in particular: data; the views of local people; information about future trends and academic research. The diagram below gives a useful snapshot of what's involved:



Source: Shared Purpose: Shared Future Statutory Guidance, SPSF 3

- 4.5 The statutory guidance states that a deeper examination of the information and data from sources like these will help the PSB prepare a more rigorous product. They will have to look at the long term, consider what the evidence tells them about how to prevent problems from happening or getting worse, and involve other people with an interest in the well-being of the area. Collecting and analysing good evidence is integral to this process. Appendix one draws out some key points from the guidance.
- 4.6 The process of engaging people in the development of the well-being assessment is currently underway. A brief synopsis of the process is shown at appendix 2. To date we have received around 800 responses from members of the community. These have been drawn out from extensive public engagement grounded in some of the key data items that we would expect to form part of the well-being assessment. At this stage some of the most commonly raised issues are about the affordability of housing in the county, problems with public transport and the vibrancy of local retail centres, particularly in the south of the county. More details from the emerging findings are shown as appendix 3.
- 4.7 Engagement will continue through October into early November, a calendar of remaining events and a timeline for the completion of the assessment are shown in appendices 4 and 5. The well-being assessment will be available for scrutiny when the committee meets in February 2017 before being presented to the PSB for a decision in March.

## **5 REASONS**

- 5.1 To ensure that we comply with requirements of the Well-being of Future Generations Act and develop of a robust evidence base that will help us shape the future of the county to meet the needs of current and future residents, visitors and businesses.

## **6 RESOURCE IMPLICATIONS**

- 6.1 The work identified in this paper is being carried out within existing resources.

## **7 EQUALITY, SUSTAINABLE DEVELOPMENT AND CORPORATE PARENTING IMPLICATIONS**

- 7.1 There are no specific implications identified at this stage.

## **7 AUTHOR**

Matthew Gatehouse, Policy and Performance Manager  
[matthewgatehouse@monmouthshire.gov.uk](mailto:matthewgatehouse@monmouthshire.gov.uk)  
01633 644397

### The Well-being Assessment

There are a number of statutory guidance documents that describe how the PSB should discharge its duties under the Act. The full guidance documents can be viewed at <http://gov.wales/topics/people-and-communities/people/future-generations-act/statutory-guidance/?lang=en>.

This page draws out some key points relating to well-being assessments:

- The assessment must provide an accurate analysis of the state of well-being in each community and in the area as a whole.
- It will be expected that the PSB uses an extensive range of sources from which to assess the state of well-being, for example and statistical data; academic research; and qualitative evidence which captures people's opinions and perceptions.
- In preparing its assessment of local well-being, a board will have the opportunity to capture the strengths and assets of the people and their communities. Boards should recognise and build on these strengths to help improve the social, economic, environmental and cultural well-being of the area.
- The assessment must identify the geographic community areas which comprise the board's entire area. In Monmouthshire we have decided to define five area clusters based around our largest towns, Usk, Abergavenny, Monmouth, Chepstow and Caldicot.
- Assessing the well-being of each community is intended to ensure that the differences between the various communities within a board's area are analysed.
- In addition to looking at the general economic, social, environmental and cultural well-being of the area the assessment will need to look specifically at the well-being of the people in the area. This includes those who are vulnerable or disadvantaged, people possessing a protected characteristic as defined by the Equality Act, children and young people in need of care and support.
- The assessment must include predictions of likely future trends in the economic, social, environmental and cultural well-being of the area to ensure the PSB is taking account of the long term needs of the area as well as the short term.
- The guidance also describes how the use of evidence and analysis could usefully be divided into two main components, namely the "situation analysis" – the painting of a broad picture of well-being within the board's area so that potential priorities for the area can be identified (the assessment of local well-being); and the "response analysis" – the detailed analysis of individual issues and themes to inform the development of the local well-being plan.

Effective involvement of people and communities is at the heart of improving well-being currently and in the future. It recognises the importance of involving people in decisions that affect them.

Our Well-being Assessment has begun with an extensive engagement exercise which we have called Our Monmouthshire. Since late August staff from the local authority and PSB partners have been attending a wide-range of community events to share data and gather people’s views. We want to understand whether the information we have about our communities truly reflects peoples lived experiences. The assessment needs to capture the strengths and assets of communities so we have been asking two broad questions:

- What’s good?
- What would make it better?



Large maps have been used and populated with data and facts about the county and the 5 community areas we have identified as well as long term trends. All material has been produced bilingually in accordance with the Welsh Language Standards. People have then



been asked to write on postcards to share their views to supplement the quantitative information. They also have the opportunity to share views via an on-line survey or on Monmouthshire Made Open.

To date we have been at more than 20 events and received more than 800 responses. These are in the process of being analysed. The initial engagement will conclude in early November and the findings analysed to feed into the production of the well-being assessment. We will then begin a second round of

engagement to help us better understand the issues that are being raised. At this point we will begin to move from what the guidance refers to as the *situation analysis* to the *response analysis* phase.

**craker** - What's good? Great education - love my kids' school, good local sports provision especially for children (my sons' volunteer rugby coaches are amazing), stunning natural landscape, local heritage (castles!), 6

What could make it better? No tolls on the Severn Bridge, more formal recreational green spaces, closer general hospital (nearest are 35-40 minutes away)

[Reply](#) [Report idea](#)

---

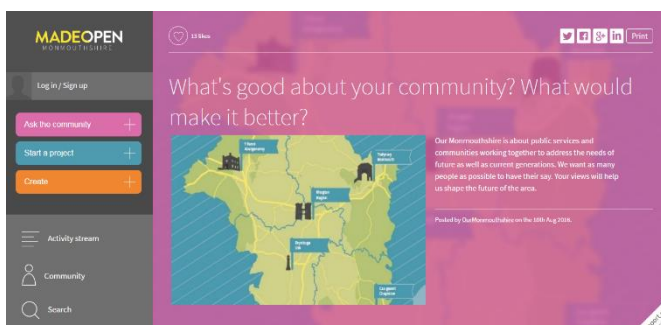
**Rosebud** - By Rose (10), Sam (9) and Jack (6): 5

We like the countryside, our neighbours and being close to friendly people, going round my friend's house, school is brilliant and I love the teachers, Gwent Music Service (especially orchestra at South Monmouthshire music centre on Fridays), my rugby team (playing for Chepstow and going to watch the Dragons).

What could be better? Free bus passes for children (so we can get into town without a lift from our parents), safer walking and cycling routes - especially to school, being able to get to people's houses more easily

[Reply](#) [Report idea](#)

[Report a bug](#)



### Emerging Findings

**Theme:** Culture

**Includes:** Culture, Language and Sport & Where I Live

The data suggests:

- House prices are very expensive – well above the Wales average and just above the UK average
- Journey times to service like GPs and leisure centres are very long from rural areas, especially when travelling by bus

What people are telling us:

- Housing is expensive, including private rented sector, many villages are unaffordable for young people
- There is not enough affordable housing, especially for young people and single person households
- When new housing is built there are concerns for the pressure placed on other local services with not enough investment into community facilities
- The county is well-connected if you have a car, there are more issues if you don't
- Low levels of public transport are a big issue, especially access to Cardiff, Bristol and Newport
- Shopping locally is expensive and a lot of people don't use local shops, what would encourage them to do so?

**Theme:** Society

**Includes:** Health, Well-being and Happiness & Community Safety

The data suggests:

- Monmouthshire residents generally have good health when compared with neighbouring Welsh counties.
- Both adult and childhood obesity is rising.
- Burglaries in Monmouthshire are higher than the average for Wales but reported anti-social behaviour incidents are much lower with the area around Abergavenny seeing the lowest levels.

What people are telling us:

- Rural areas seem to suffer a bit more: e.g. poor street lighting
- People seem to feel as though there is a safe and strong sense of community
- Many concerns for anti-social behaviour, driven in part because young people don't have enough things to do locally and get into trouble

- It would be better if there were more places for teenagers to spend their time, for example more sports and leisure opportunities with longer opening hours
- People don't perceive Monmouthshire as having a high police presence and would like to see a quicker police response
- Improved cycling routes needed
- Ambulances have to be called for non-emergency hospital visits because bus systems aren't good enough and not everyone has cars
- Lack of health facilities for disabled people
- Need better access to GP services

Theme: Environment

Includes: Environment and Countryside & Waste Pollution and Climate

The data suggests:

- Good levels of recycling
- Data shows good actual levels of cleanliness compared to other areas but peoples satisfaction with cleanliness tends to be lower than in neighbouring counties
- Monmouthshire residents have a high carbon footprint compared to other counties in Wales and the UK

What people are telling us:

- People are generally really pleased with the recycling system- particularly the collection of waste
- Litter problem with people reporting a lot of waste on main roads
- Footpaths often overgrown- discourages visitors

Theme: Economy

Includes: Education and Skills & Jobs and Economy

The data suggests:

- Earnings of residents are high, but salaries earned within the county are lower than the Wales average
- Gross Value Added (a measure of economic output) is high in relation to Welsh comparisons but not in a UK context
- Good levels of exam attainment at GCSE and A Level

What people are telling us:

- More employment opportunities needed- people are currently travelling out towards Cardiff/Bristol
- People can't rely on or use buses to get to work
- Impact of Severn Bridge tolls on job opportunities and the economy, particularly in the south of the county
- Impossible to commute without a car- often families need 2 cars if working in two different locations.
- Local retail, when shops close, no other businesses seem to be moving into them
- Free parking and location of parking is good and must be retained to encourage use of the town shops and facilities
- Retail centre in Caldicot needs to be improved
- Keep Chepstow Tourist information centre
- Encourage new generations to go into farming which is a key sector of Monmouthshire economy
- Not enough educational psychology provision
- Primary school quality is good, but concerns of a poorer quality in secondary schools

This is an interim analysis of evaluation and is not comprehensive or necessarily reflective of the final well-being assessment. If the issues you think are important aren't featured here then please let us know:

[www.monmouthshire.madeopen.co.uk](http://www.monmouthshire.madeopen.co.uk)

<http://www.monmouthshire.gov.uk/our-monmouthshire>



## Appendix 5

### Calendar of Remaining Engagement Events (subject to change)

Date	Location	Activity ( AM)	Activity (PM )
Monday 3rd October			E2C ( Jade Atkins)
Tuesday 4th October	Parkway Cwmbran	Parkway Cwmbran	Monmouthshire Voices Celebration event
Wednesday 5th October			LGBT Caldicot Zone ( Jade)
Thursday 6th October	Abergavenny Park Street School ? Contact Freddy Edmonds	Community Kids - Parent and Toddler group	(Day) LGBT Chepstow School evening LGBT Group Carewent) - Jade Atkins
Friday 7th October	MOD Covenant Day ( DMC)	ABHUB Listening Event	ABUHB Listening Event
Saturday 8th October	Caldicot Castle	Food Festival	Caldicot Castle Food Festival
Sunday 9th October			
Monday 10th October	Usk County Hall	Bronze Ambassador Training	30 - 40 YP
Tuesday 11th October	Caldicot Hub 10.00am - 12.00pm	Back to School – Back to Work’ event on behalf of the DWP	
Wednesday 12th October	Abergavenny 50 + Trinity Chapel.		
Thursday 13th October	Gilwern	Coffee Morning 11am Hope Baptist Church, Main Rd Gilwern NP70AU.	
Tuesday 18th October	Priory Centre, St Mary’s Priory, Monk Street, Abergavenny NP7 5ND	Employment, Jobs and Skills Fair 10am - 1pm	
Wednesday 19th October		Access for all	
Thursday 20th October			LGBT Group Chepstow School
Thursday 3rd November	The Bridges 2pm - 3pm		Monmouth Visually Impaired Group

**Timeline for Production of Well-being Assessment**

This is an outline of the main activities and dates:

What	Responsible	Involved	Date	Jun	Jul	Aug	Sept	Oct	Nov	Dec	Jan	Feb	Mar	Apr
Staff briefing at MonDelivers	MG	WM, HC, SL	7/6/16											
Member Seminar	MG	RC, HC	28/6/16											
Prioritise drop-in locations	RC	HC, MG												
Design of campaign materials	RW, KW, PM	MG, HC, RC, AB												
Print of campaign materials	Made Open	HC RC MG												
Digital Campaign launch	MG	RC, HC, AB												
Press Release	AB	RC, DJ, MG												
Receive data from Data Unit	MG													
Engagement – Round 1	RC/HC	All												
Analyse R1. Findings	MG	tbc												
Drop-in clinic with WG	SL	MG, HC, DB												
Identify other evidence sources	MG													
Synthesise and triangulate evidence	MG	DB, SS, HC												
Integrated Population Needs Ass't	MG	PD, NN												
Draft well-being assessment	MG													
Consult on completed assessment	RC													
PSB Scrutiny Panel	SL	HI, HC	Feb 17											
Council sign-off	MG		9/3/17											
Public Service Board sign-off	SL		29/3/17											
Publication	MG		1/4/17											